

TACT 3-LED LIGHTHEAD

e13 03 9922

E13 10R02 9916

11~30VDC



FEATURES

- High-Intensity 1W LED x 3
- Multi-Voltage Input 11~30VDC
- Built-in 12 Selectable Flash Patterns
- LEDs rated to 100,000 hours of operation.
- Non-volatile memory recalls last flash pattern used at power up.
- Multiple units are synchronizable and can flash simultaneously or alternately.
- Reverse polarity protection.
- Weatherproof and vibration resistant design for external or internal use.
- Aluminum base for heat dissipation.

SPECIFICATIONS

Meets: SAE, Title XIII, e13, E13

Bulb: 1W LED x 3pcs

Warning Patterns: 12 Flash Patterns

Operating Voltage: 11~30VDC

Avg. Current: 0.2A @12.8VDC / 0.11A @24VDC
(varies with flash pattern)

Avg. Power: 2.6 Watts (varies with flash pattern)

Max. Current: 0.4A @12.8VDC / 0.22A @24VDC

Max. Power: 5.2 Watts

Wires: Red-Vcc: 20cm (20AWG)

Black-GND: 20cm (20AWG)

Yellow-Flash Patterns & Sync: 20cm (20AWG)

White-Phase: 20cm (20AWG)

Fuse Recommend: 3A

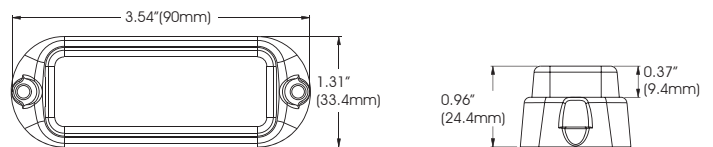
Multi-Unit Synchronization: Over 15

Storage Temperature: -40°C to +80°C

Operating Temperature: -30°C to +65°C

Available in: RED, BLUE, AMBER, WHITE

DIMENSIONS



FLASH PATTERN

Momentarily apply +VDC to YELLOW wire:

- once for next pattern
- quickly three times for reset

FP#	Flash Patterns		
0	Random (all)	6	Quad
1	Single (split)	7	Quint
2	Single	8	8 Flash
3	Mega	9	Single-Quad
4	Double	10	Single H/L
5	Triple	11	Single-Triple-Quint

NOTE: This unit may not be factory set at pattern 0



JULUEN ENTERPRISE CO.,LTD.

8F-1, No.502, Da An Rd., Shulin, Taipei Hsien, 238 Taiwan, R.O.C.

TEL: +866-2-86873177 FAX: +866-2-86873166