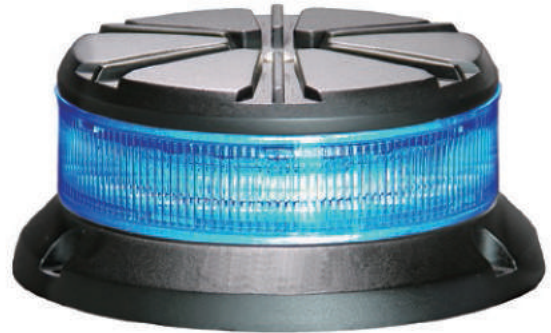
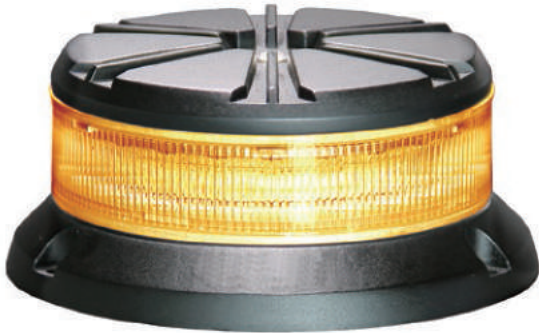


# FD24 MINI

## Beacon

Four kinds of installation

More compact



- The housing is made of aluminum alloy. Good heat dissipation, stable brightness after long working.
- The outside cover is made from PMMA. Wear-resisting, 92% transmittance rate.
- Meet and exceed SAE J845 and ECE R65 Class1(blue and amber)
- 8 kinds of flash patterns, including rotating mode(R65)
- More compact (Ø110 × 47.5mm). Easy to get through a low garage
- 4 kinds of installation: Screw mount from top and bottom (remove 3 suction cups first), Magnetic mount and suction cup mount

Item	Color	Voltage	Max Power	Led	Flash pattern	Materials	Certification	Wire
080602A	●	10-33V	24W	12PCS 1W	8(including rotating)	Outside cover: PMMA Top and base: aluminum alloy	SAE J845 ECE R65 Class 1	Three-core parallel lines: 18AWG × 3C / 3 m+ A13-163 cigarette lighter
080602B	●							
080603A	●							Single line: 20AWG × 3C (red, yellow, black) 35cm
080603B	●							

